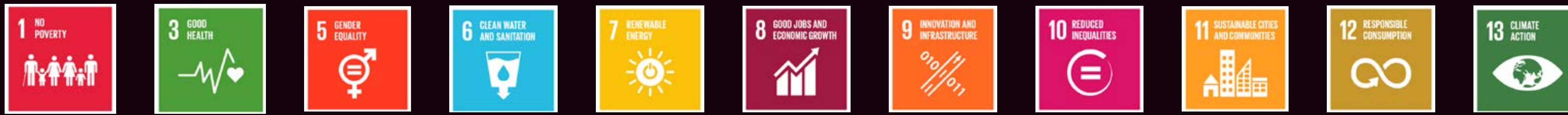




COMMUNITY DEVELOPMENT CENTER FOR THE ARTS

UN GLOBAL SUSTAINABLE DEVELOPMENT GOALS



718 E BROAD ST. SAVANNAH, GA

A historically rich structure, it arose in the 1940's as an **all blacks theater**. The city was still segregated by bull street. Commonly remembered with heavy nostalgia to a different period of life.

Later, turned into a Hungry World Mission Facility working against Savannah's poverty crisis.

Remembering this cultural significance and tense past **The Melt** strives to bring back the sense of community once felt in the area while donating profits to **rectify** previous wrong-doings in **systemic racism** and **gentrification**

USER EXPERIENCE

Struggling Artists; a new type of community integrated with career development and one-on-one management assistance to help the artists beyond the show.

Young Artists and Music Enthusiasts; inclusive to all genres with various venues including a jazz bar outdoor house venue, roof venue that can open down to below to accommodate large or smaller crowds.

Experience Seekers; adventure begins before even entering in the backyard with local food trucks, brews, music by donation, a campfire with s'mores to roast. Inside feel welcomed by a thrift store offering local art and finds before the journey up through an interactive art experience by local artists before finding yourself at the roof bar open to public apart from reserved events.

Foodies; ranging options of outside and casualty from first level fine dining, outdoor picnic and food-trucks, on rooftop small plates provide opportunity for a longer stay and a more involved experience.



Savannah Locals; exciting new opportunities for fun and community building

CONCEPT // SUI GENERIS

INTIMATE UNIQUE INCLUSIVE



SUI GE-NE-RIS

/sōō, ī, 'jen r s, sōōē /

(adv.) "OF ITS/HIS/HER/THEIR OWN KIND", "IN A CLASS BY ITSELF", THEREFORE "UNIQUE"

A candle never melts the same twice. Every use transforms it to a new pattern, form, and experience. This is the inspiration for Sui Generis. An ever-evolving space. Moldable to any form. Blending over and over, of the people and experiences, slipping from within. Creating a new resounding memory with each use.

Biophillic and nostalgic activities, graphics, and furnishings bringing people together over common history and culture.

Drawing us to our core that lights the flame within us all.



COMMUNITY

"14.4% of Chatham County residents live below the poverty line. In Savannah, the county and region's largest city, nearly 23% live in poverty."



COMMUNITY OFFICE



EXPLORERS

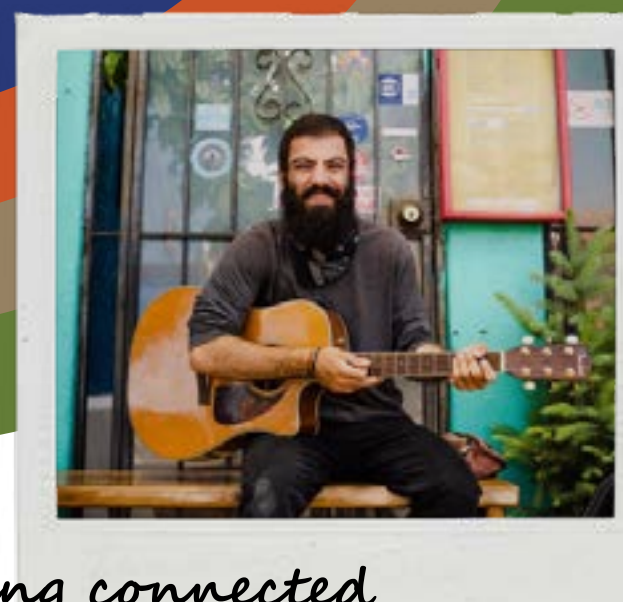
"A strong art community give people a safe place to go out and enjoy more than just going to bars."

"I like how intimate house shows are but typically i like the artists at concerts more and festivals are too long in my opinion but they tend to have more food and cool stuff like that."



CREATORS

"The hardest part is getting connected with a professional platform and having the funds to get to that level"



FINE DINING

UNIVERSAL DESIGN

PROVIDING AN EQUAL OPPORTUNITY EXPERIENCE FOR EVERY INDIVIDUAL



GENDER NEUTRAL PRIVATE RESTROOMS

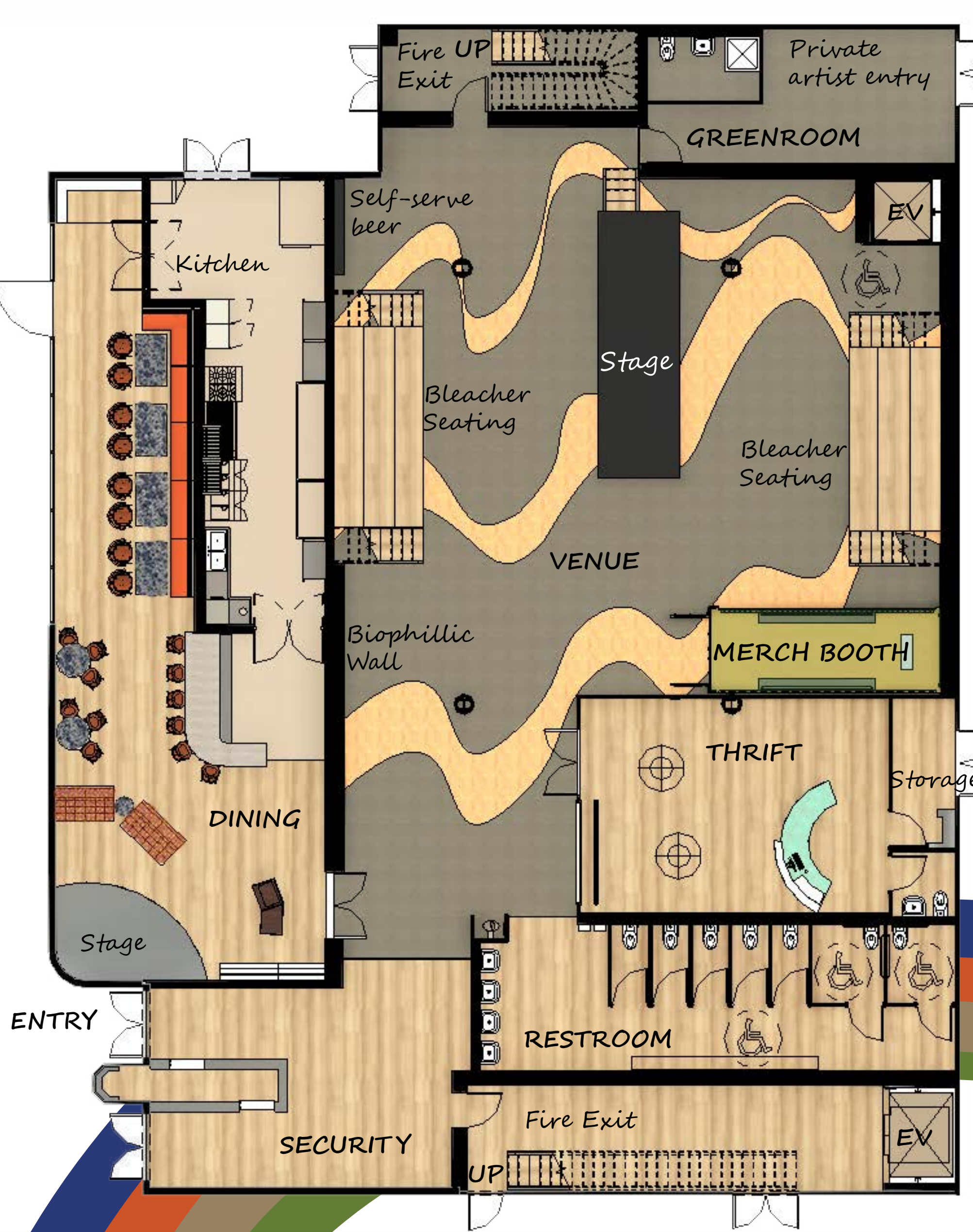
Don't miss a beat with the open plan!
Take a photo with the artist!



PLACE ATTACHMENT THEORY

The emotional bond between a personal experience and a particular place -> Targeting universally nostalgic elements from design, culture, and history. Memories like; the original East Side Theater or an unforgettable night under the stars.

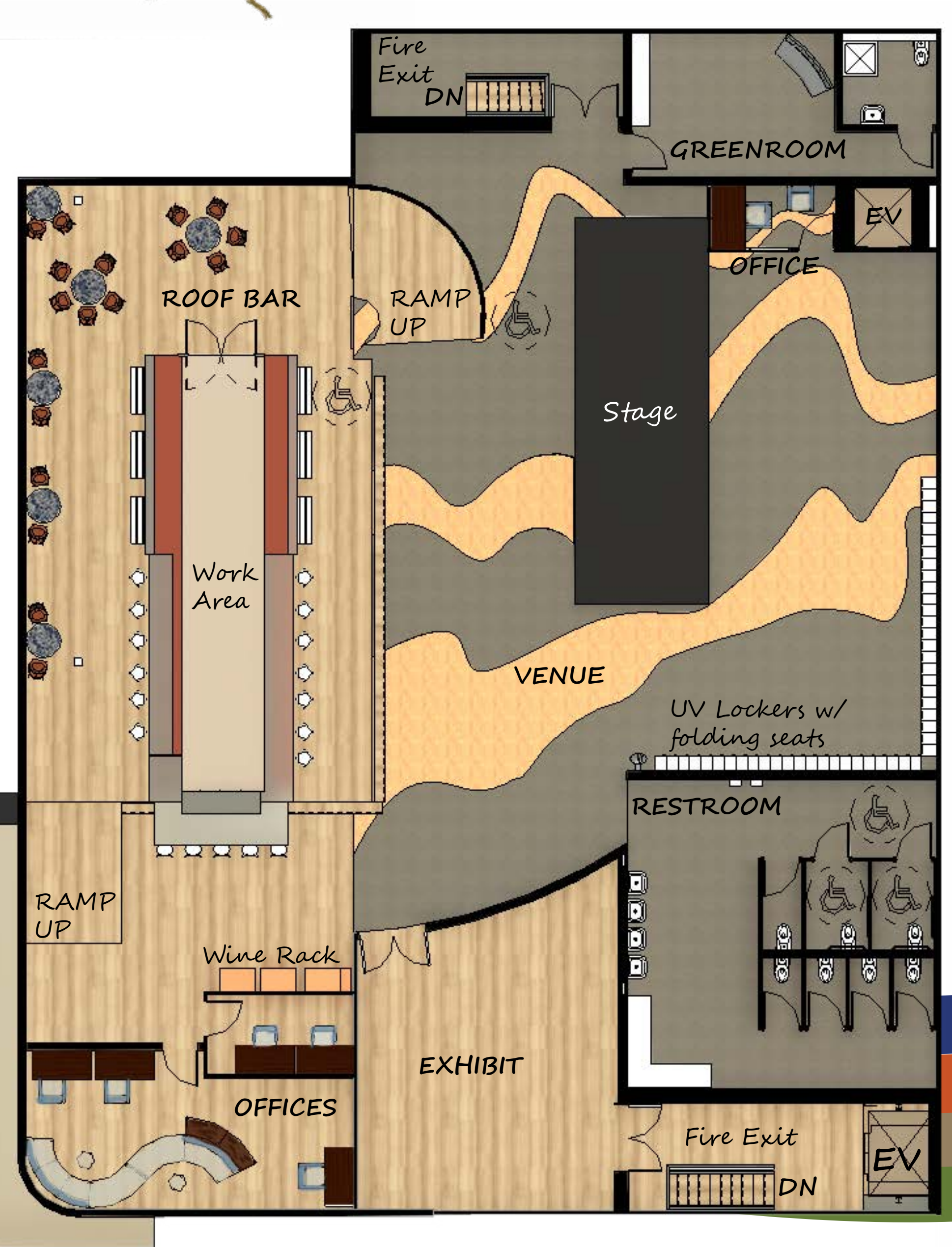
BACKYARD HOUSE VENUE, FIRE PIT, FOOD-TRUCKS & S'MORES BAR



PROGRAM

LEVEL 1
100 ENTRY
101 DINING
102 KITCHEN
103 VENUE
104 FIRE EXIT
105 GREENROOM
106 MERCH
107 THRIFT
108 RESTROOMS
109 FIRE EXIT

LEVEL 2
200 EXHIBIT
201 OFFICE
202 SECURITY
203 ROOF BAR
204 VENUE
205 FIRE EXIT
206 GREENROOM
207 OFFICE
208 RESTROOMS
209 FIRE EXIT



high bar seating 3'10" stage to sub-level T

LEVEL 1 SCALE 1/8"

LEVEL 2 SCALE 1/8"

ROOFTOP BAR SCALE 1/4"

bar height 2'4" ADA bar height 1'8" ramp to sub-level T